

Railway connection:



Roadway connection:



MORAVIAN – SILESIA DEVELOPMENT ZONE:
ATTRACTIVE OPPORTUNITY FOR INVESTMENTS

- three attractive parks (František II, Dukla, Barbora) in one development concept
- located in the center of the triangle created by Ostrava, Karviná and Havířov
- more than 1.2 million people within one hour of transport (cca 5 mil. within 100 km radius)
- a very wide choice of investment opportunities
- mutual proximity of the three areas – important operational synergies

Competitive advantages of the Moravian - Silesian Region

- strategic location near Poland and Slovakia, and their adjacent potential
- international multimodal transport hub
- International Airport Leoš Janáček in Ostrava-Mošnov (suitable for landing large commercial aircraft)
- availability of sufficiently skilled and educated workforce

Attractive investment incentives - support from both regional and state level

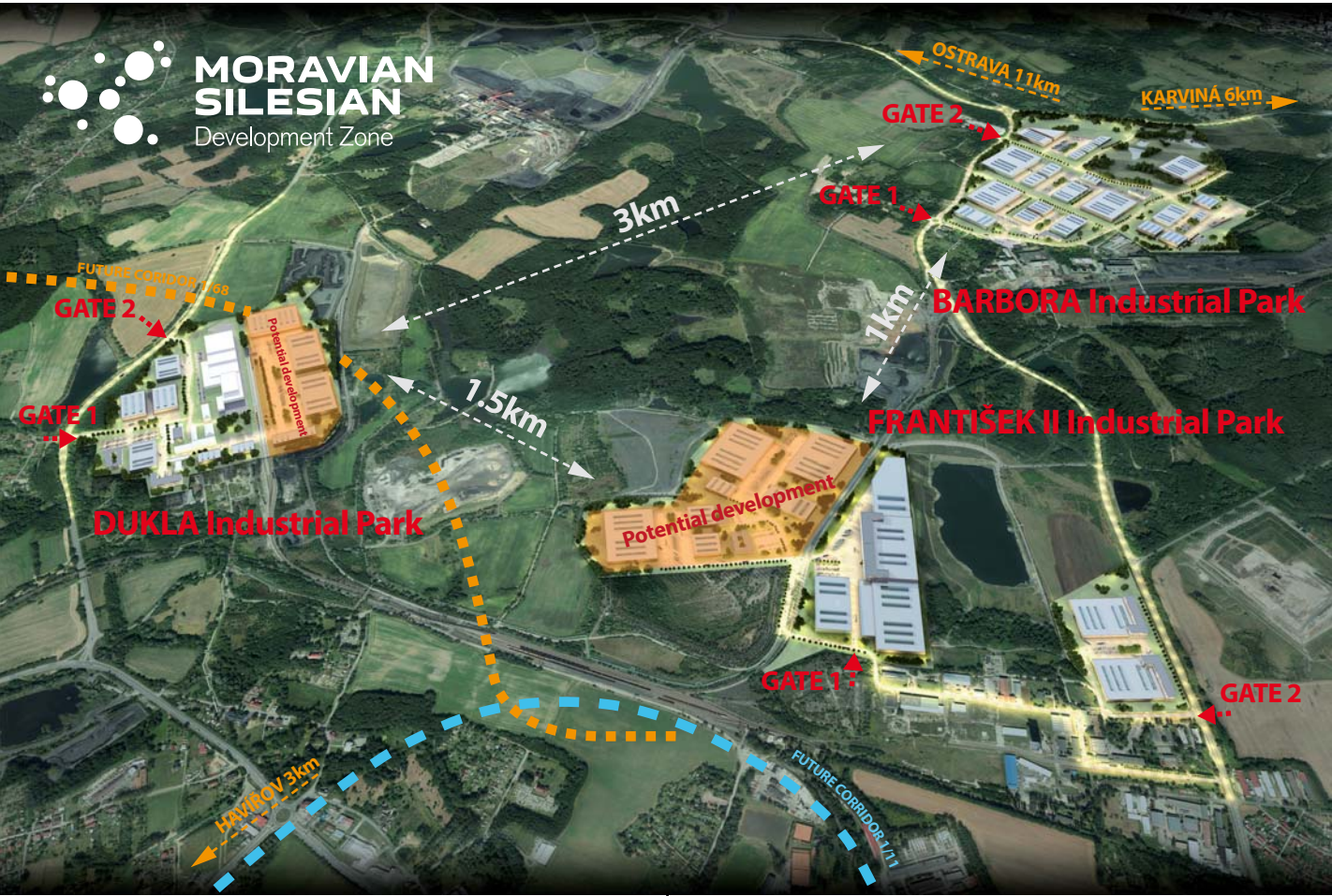
- financial incentive for each job created
- tax relief
- direct financial support for the acquisition of infrastructure and equipment
- close cooperation between the commercial and public sectors, responsive and flexible approach
- political support from municipalities and government of the Czech Republic

Education and research, the latest technology

- 32,000 students within six colleges and universities, certified schools teaching in English (1st International School of Ostrava)
- dynamic growth in research, development, innovation and advanced technologies

Improving living environment

- advanced technical, commercial, educational and social infrastructure
- a wide range of leisure activities



Multitude of foreign and local investors already successfully operating in the region

(e.g.: Hyundai Motor Manufacturing Czech, Hyundai Mobis, ABB ČR, Bang & Olufsen, Brembo Czech, Brose CZ, Continental Automotive Czech Republic, CTP, CTS Czech Republic, Cromodora Wheels, Gebrüder Weiss, GE Money, Goodyear, Grupo Antolin, HB Reavis, HP-Pelzer, ITT Holdings Czech Republic, Mahle Behr, Mölnlycke Health Care, Pegatron Czech, Plakor Czech, Siemens, SungWoo Hitech, Tatra Trucks, Tieto Czech, Visteon-Autopal)

The Region in Facts and Figures*

Population	nearly 1.25 mil.
Population within 100 km	5 mil.
The region's share on GDP of the Czech Republic	9.8 %
GDP per capita	12,460 EUR
Unemployment rate	9.8% (12/2014)
Private investment in the region (1993 - 2012)	6.87 billion EUR

* Source: Czech Statistical Office and internal sources

More information about the benefits of investing in the Moravian-Silesian Region: <http://www.invest-msr.com/en/>



MORAVIAN – SILESIA DEVELOPMENT ZONE:
ATTRACTIVE OPPORTUNITY FOR INVESTMENTS



Barbora



Project Barbora - visualization



Barbora

Location:
Karviná, city district Karviná – Doly

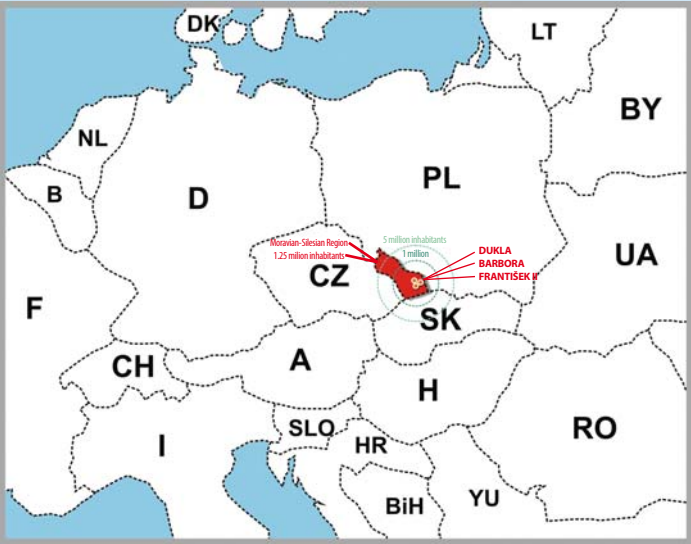
Surface area:
92 ha, usable land for future investments 65 ha

- Area characteristics:**
- strategic development area, whose realization was ratified by the Czech government in 2013
 - preparation for future use is managed through cooperation with the Moravian-Silesian Region
 - the area is bordered by roads I/59 and II/474
 - the land is intended for processing industry

- Transportation:**
- excellent transport connection – arterial motorways I/59 and II/474
 - railway corridor in vicinity (4 km)
 - D1 highway (16 km)
 - International Airport Leoš Janáček in Ostrava-Mošnov (36 km)

Technical infrastructure:
in progress - project preparation to equip the area with technical infrastructure and transport access in sufficient amount (water & sewer lines, electrical power, low voltage distribution, gas line, hot water piping, area road networks)

Opportunities are available to link accessory office and storage needs of investors, in this location and in others nearby, within the Aseatal Group real estate portfolio.



CONTACT
Aseatal Land, s. r. o.
Gregorova 2582/3
702 00 Ostrava, Czech Republic
Phone.: +420 596 262 222
E-mail: projekty@asental.eu
www.asental.eu



CONTACT
Moravian-Silesian Region
28. října 117
702 18 Ostrava, Czech Republic
Phone: +420 595 622 222
E-mail: posta@kr-moravskoslezsky.cz
www.kr-moravskoslezsky.cz